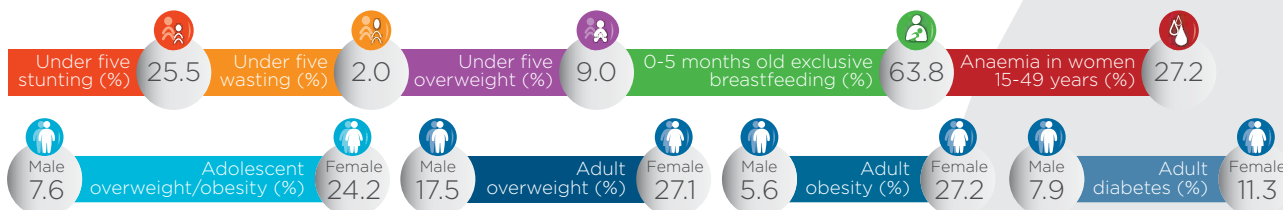




Joined: November 2013  
Population: 1.37 million

# Eswatini



## Institutional transformations in 2017-2018

Not available for 2014\*

**Bringing people together into a shared space for action**

Not available for 2015\*

Not available for 2016\*

Not available for 2017\*

Not available for 2018\*

Not available for 2014\*

**Ensuring a coherent policy and legal framework**

Not available for 2015\*

Not available for 2016\*

Not available for 2017\*

Not available for 2018\*

Not available for 2014\*

**Aligning actions around common results**

Not available for 2015\*

Not available for 2016\*

Not available for 2017\*

Not available for 2018\*

Not available for 2014\*

**Financing tracking and resource mobilisation**

Not available for 2015\*

Not available for 2016\*

Not available for 2017\*

Not available for 2018\*

2018 total weighted

—

## 2018-2019 PRIORITIES

[SCALINGUPNUTRITION.ORG/ESWATINI](http://SCALINGUPNUTRITION.ORG/ESWATINI)