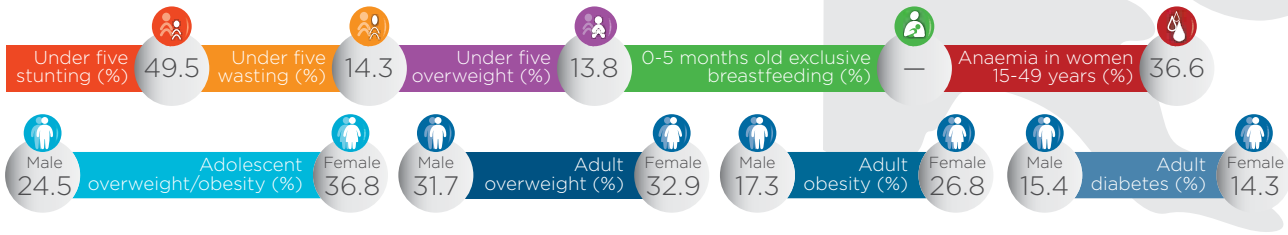




Joined: April 2016
Population: 8.25 million

Papua New Guinea



Institutional transformations in 2017-2018

Not available for 2014*	Bringing people together into a shared space for action
Not available for 2015*	
Not available for 2016*	
Not available for 2017*	
Not available for 2018*	
Not available for 2014*	Ensuring a coherent policy and legal framework
Not available for 2015*	
Not available for 2016*	
Not available for 2017*	
Not available for 2018*	
Not available for 2014*	Aligning actions around common results
Not available for 2015*	
Not available for 2016*	
Not available for 2017*	
Not available for 2018*	
Not available for 2014*	Financing tracking and resource mobilisation
Not available for 2015*	
Not available for 2016*	
Not available for 2017*	
Not available for 2018*	
2018 total weighted	—

2018-2019 PRIORITIES

SCALINGUPNUTRITION.ORG/PAPUA-NEW-GUINEA